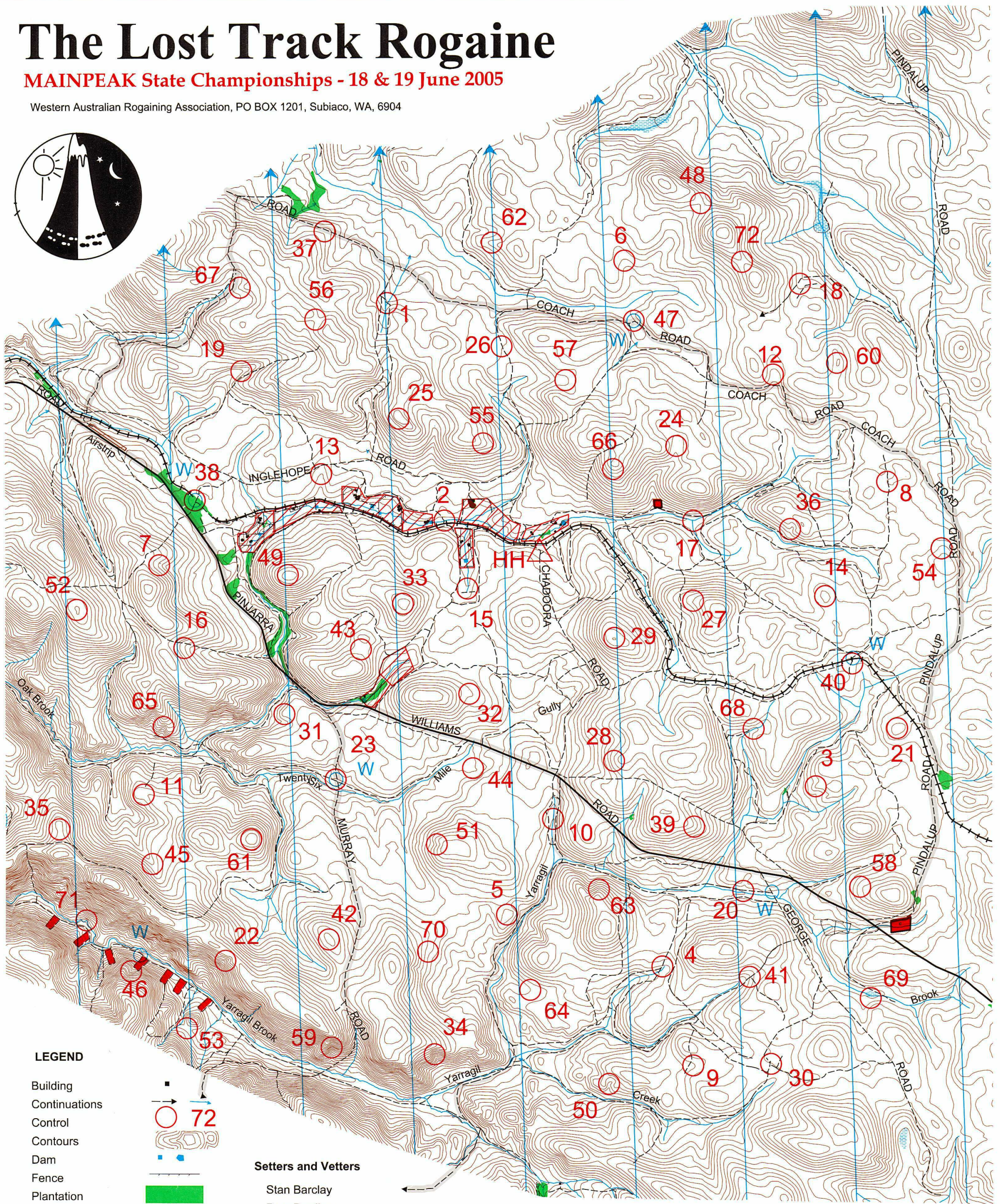
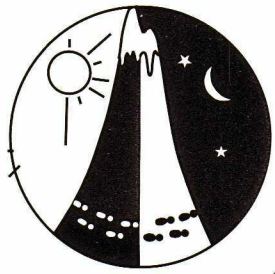


The Lost Track Rogaine

MAINPEAK State Championships - 18 & 19 June 2005

Western Australian Rogaining Association, PO BOX 1201, Subiaco, WA, 6904



LEGEND

- Building
- Continuations
- Control
- Contours
- Dam
- Fence
- Plantation
- Hash House
- Magnetic North Line
- Out of Bounds
- Road, Sealed
- Road, Major Gravel
- Track
- Railway
- Patrolled Road
- Watercourse
- Water Drop

Setters and Vettors

- Stan Barclay
- Pam Bradley
- Dave Hartley
- David Muir
- Brian Danby

Thanks to:

- Kym Pearce
- of CALM Mundaring District.



SCALE 1:50,000, 5 metre contour interval
0 1km 2km 3km

This map was produced using OCAD 8 by the Western Australian Rogaining Association, wa.rogaine.asn.au.
Data supplied by DOLA and used under copy licence 393/93. Possession of this map does not give right of entry to this area.

The Lost Track WARA 24Hr State Championships Rogaine 18/19th June 2005

No.	Description	Points	No.	Description	Points	Important Information
1	The track/watercourse junction	10	43	The broad saddle	60	Control Cards From 11:30 Saturday
2	On the watercourse	10	44	20 metres @ 280 degrees from conspicuous dead tree	60	
3	The spur	10	45	The gully	60	
4	Track junction 20 metres at 90 degrees	10	46	The gully	60	
5	The summit	10	47	South side of snake pit! Water point	60	
6	The gully/track crossing	10	48	The saddle on a track	60	
						Briefing
7	The broad gully	20	49	The summit	70	11:50 Saturday
8	The highest point on the indistinct track	20	50	The gully	70	Start 12:00 Saturday
9	The broad gully	20	51	Head of the gully	70	
10	The watercourse	20	52	The summit	70	Finish
11	The broad spur near dead old tree	20	53	The saddle	70	
12	The broad gully	20	54	The broad spur	70	12:00 Sunday
						Hash House
13	The gully	30	55	The spur	80	
14	The broad knoll	30	56	The saddle	80	Opens 16:00 Sat Closes 13:00 Sun
15	The head of watercourse amongst grass trees	30	57	A shallow remnant railway cutting	80	
16	The gully	30	58	The broad spur	80	Sunset 17.15
17	The creek/overgrown watercourse junction	30	59	The gully	80	
18	A logging clearing between two indistinct tracks	30	60	The knoll	80	Sunrise 07.16
19	The gully	40	61	The broad summit	90	Moonrise 13.59
20	North side of creek at foot of gully	40	62	The spur	90	
21	The broad knoll	40	63	The spur	90	Moonset 02.46
22	The gully	40	64	A small clearing on a very indistinct track in the broad gully	90	
23	The track/road junction. Water point	40	65	The head of gully	90	Late Penalty
24	The broad gully on an indistinct track	40	66	Beneath the south edge of summit	90	
25	The knoll	40				10 points per minute or part minute
26	A sign on the track 25 metres @ 270 degrees	40	67	The spur	100	
27	The spur on a track	40	68	The watercourse	100	Controls Used 72
28	The broad spur	40	69	The south edge of swamp	100	
29	The summit	40	70	On a disused N/S track east side of logging clearing	100	Total Points 3840
30	The track junction	40	71	North bend in the watercourse	100	
			72	The saddle	100	
31	The spur	50				
32	The broad spur	50				
33	The summit	50				
34	The head of the gully	50				
35	The spur	50				
36	The gully	50				
37	Western gravel pit off the road	50				
38	The railway track junction. Water point	50				
39	The spur	50				
40	A dunny. Water point	50				
41	The indistinct track junction.	50				
42	The broad summit	50				

Water Drops: Controls 23, 38, 40, 47, and close to 46 and 20.

Patrolled Roads: Coach, Pindalup, Yarragil, Murray, Pinjarra Williams

Injured persons please wait at a water drop or on a patrolled road to be picked up by a vehicle displaying a green light.